

# CLEO 20 series

STREET LIGHT

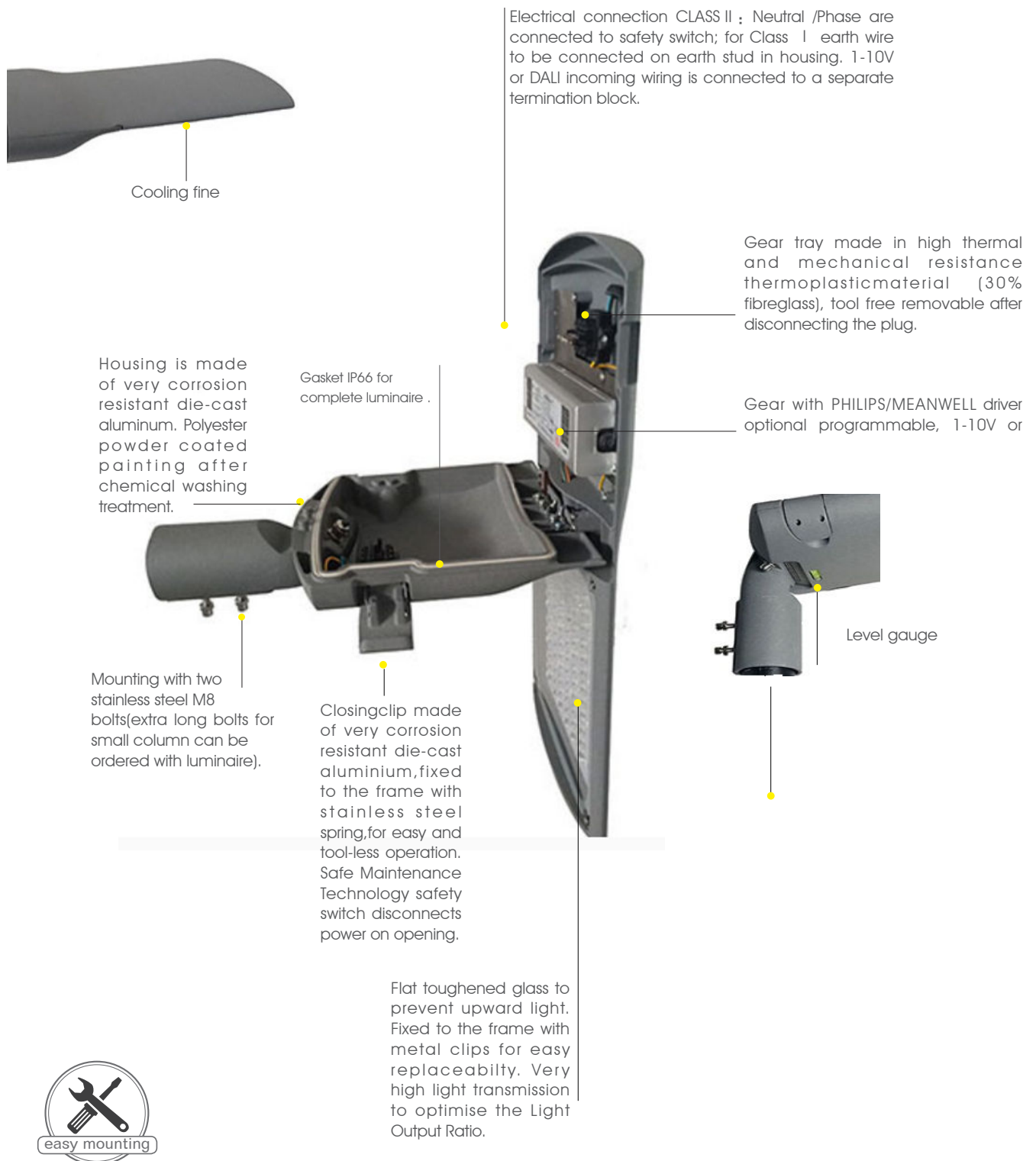


[office@migdal-or.org](mailto:office@migdal-or.org)

[www.Migdal-or.org](http://www.Migdal-or.org)

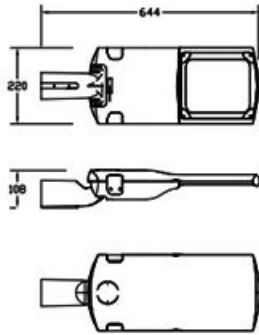
Tel: 04-8525244

## Product features



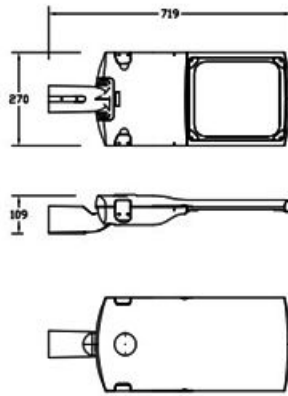
# Product Dimension

**B**



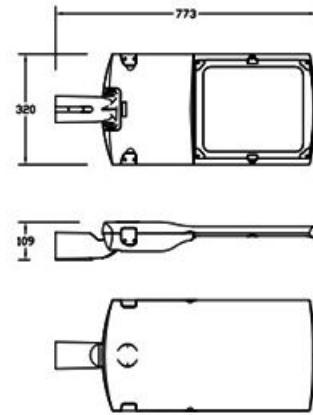
CLEO20-LED10B

**C**

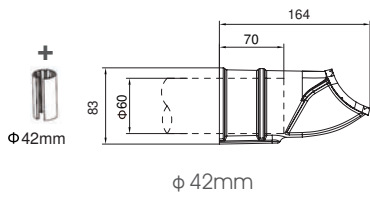


CLEO20-LED10C

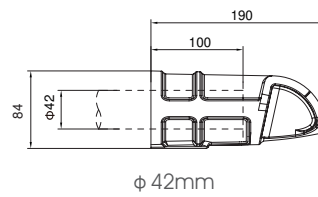
**A**



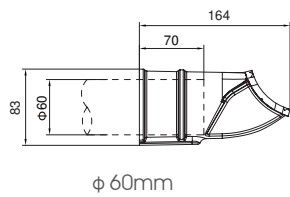
CLEO20-LED10A



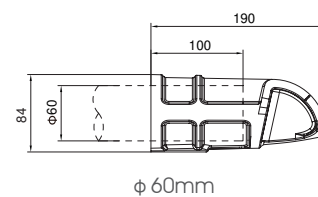
φ 42mm



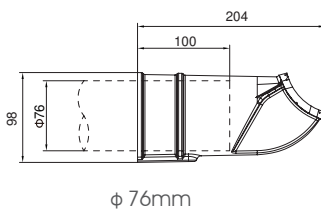
φ 42mm



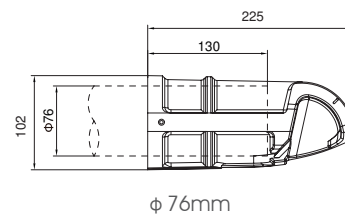
φ 60mm



φ 60mm



φ 76mm



φ 76mm



**MARKET-LEADING EFFICIENCY**

**LONG-LIFETIME AND DURABLE CONSTRUCTION**

**FULL CUTOFF LIGHT DISTRIBUTION (DARK SKY COMPLIANT)**

**EASY DEPLOYMENT AND TOOL-FREE MAINTENANCE ACCESS**

### LUXEON 5050

High efficacy and lumens in a multi-die, high power package, enabling low system costs



	LEDS	POWER (W) MIN/MAX	LUXEON 5050		L90B10 at 25°C IESNA TM-21-11	L70 at 25°C IESNA TM-21-11
			MIN(lm)	MAX(lm)		
<b>S</b>	36	30	3750	4050	> 40000hrs	> 100000hrs
	36	40	5000	5400	> 40000hrs	> 100000hrs
	36	60	7500	8100	> 40000hrs	> 100000hrs
<b>M</b>	72	100	12500	13500	> 40000hrs	> 100000hrs
	72	120	15000	16200	> 40000hrs	> 100000hrs
	72	150	18750	20250	> 40000hrs	> 100000hrs
<b>L</b>	120	180	22500	24300	> 40000hrs	> 100000hrs
	120	200	25000	27000	> 40000hrs	> 100000hrs
	120	250	31250	33750	> 40000hrs	> 100000hrs

## Product features



### PARAMETER

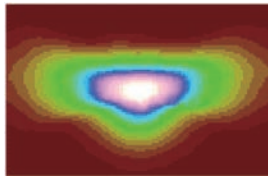
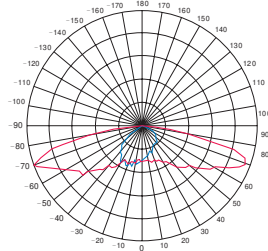
### TECHNICAL DATA

Type	CLEO20 SERIES
Light source	SMD LED Module
Color temperature	4000K as standard. Optional 2700K, 3000K & 5000K & 5700K. Amber LED available
Color stability	3 or 5 MacAdam steps for all standard LED colors
Color Rendering Index	>70 or >80 (neutral white and cool white)
Luminous Flux (led flux @ Ta=25C outdoor)	from 1800 to 45000 lm
Power	from 30W up to 250W
Luminaire efficiency	130-145 lm/W
Constant lumen output (CLO)	as requirement
Optics Material	PC
Optical Cover	Tempered Glass (5mm)
ULOR (%)	0% for flat glass versions
Spigot diameter	42 mm, 60 mm, 76 mm
Control inputs	DALI, 0-10V, Astro Dim, Step Dim
Electrical class	class I and class II (According to IEC-EN 60598)
Color	RAL9006 as standard (RAL or AKZO Future colors available)
IP rating	IP66
IK rating	IK08 (according to IEC - EN 62262)
Windage M <sup>2</sup>	XS 0.023 / S 0.048 / M 0.058 / L 0.088
Operating temperature range	-40°C < Ta ≤ 50°C
LED module thermal protection	yes
Driver thermal protection	yes
Surge protection	10kV (20kV available as an option)
Options	mini Photocell and NEMA socket, including cable
Certifications	CE CB ENEC(in certification)
Material	ADC12 / Lower copper contents

# Optics Available

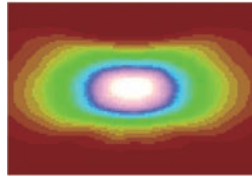
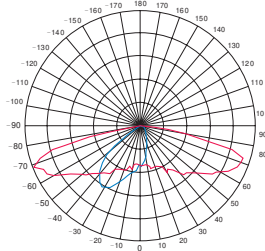
## Street series 2X3

### TYPE 1-M



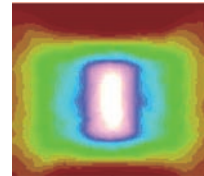
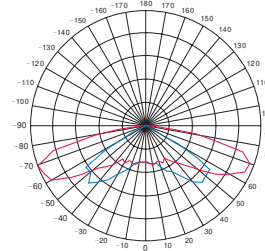
Potential application areas: footpaths, cycle paths, illuminated jogging trails

### TYPE 2-M A



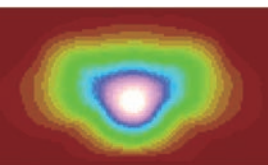
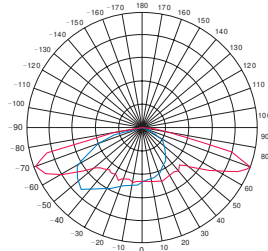
Potential application areas: streets, car parks, high way, fast road

### TYPE 2-M B



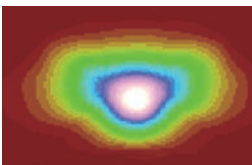
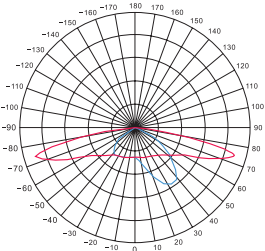
Potential application areas: streets, car parks, luminous intensity G6

### TYPE 3-M

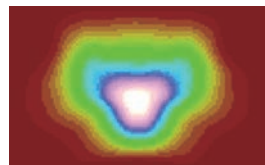
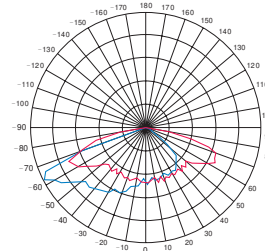


Potential application areas: wide streets, car parks, high way

### TYPE 3-L

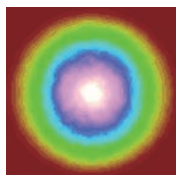
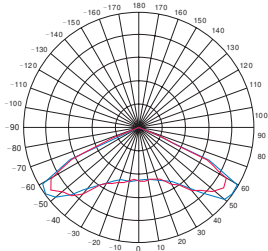


### TYPE 4-S



Potential application areas: wide streets, car parks, high way, fast roads

### TYPE 5-S



Potential application areas: car parks, airport



VERSION

RECOMMENDED MOUNTING  
HEIGHT (METERS)

CLEO20 S	4-6M
CLEO20 M	6-12M
CLEO20 L	12-15M







### Surge Protection device

Surge Protection device offers protection against lightning surges;  
 Voltage Protection level up (L-N)  $\leq 1,5$  kV  
 Voltage Protection level up (L/N-PE)  $\leq 2,0$  kV  
 $U_{oc} = 10$  kV  
 $I_{max} = 10$  kA  
 $I_{nom} = 5$  kA



### Surge Protection device

Maximum Discharge Current ( $I_{max}$ ) 10kA, 8/20 $\mu$ s  
 • Meets ANSI C136.2 Enhanced Level 10kV/5kA, IEEE C62.41.2  
 Location Category C Low Exposure and US Dept. of Energy MSSLC  
 Model Spec.  
 • Thermally Protected Varistor technology  
 • Parallel and Series Connected SPD Options  
 • IP66 Water-proof and Dust-proof



### Shorting Cap

Standard: ANSI C136.10-1996



### Photocell

Standard: ANSIC136.10-2010



### Nema Socket

Standard: ANSI C136.10



### Zhaga Connector

- Contacts rating: 1.5A, 30V (24V typical)
- Meets 10kV dielectric withstand voltage to mounting surface
- 4 pole contacts
- Pin 1: 24Vdc
- Pin 2: DALI (or DALI based protocol) -/common ground
- Pin 3: DALI (or DALI based protocol) +
- Pin 4: General I/O



### Console adapter

Spigot size 60 - 76 mm



**MIGDAL-OR LIGHTING ENG. CO.,LTD.**  
**Together for Brighten Future**

Tel: +972-4-8525244

Fax: +972-4-8525245

Whatsapp: +972-53-8056109

E-mail: [office@migdal-or.org](mailto:office@migdal-or.org)

[www.migdal-or.org](http://www.migdal-or.org)