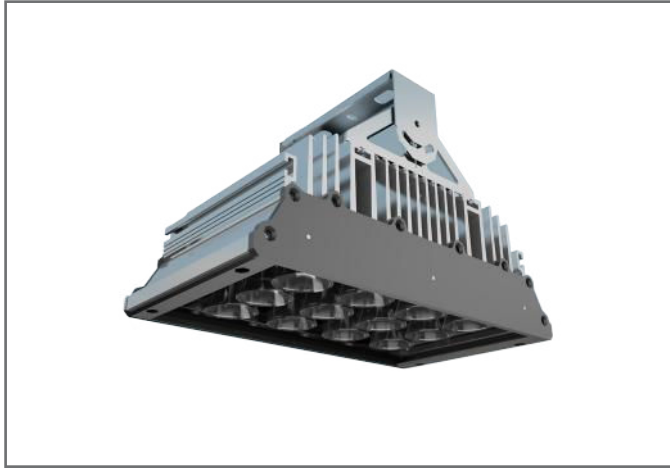


Zeus FL S1/120

Gmax

Professional LED luminaries ideal for efficiently illuminate building facades, sports fields, advertising signage, retail spaces, parking areas and industrial warehouses. The Zeus series, achieves a high level of lighting performance, making it an effective and efficient alternative to traditional lamps.

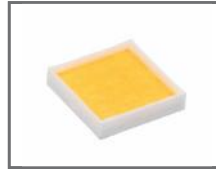


Driver Info



Type:	Constant Current
Brand:	Meanwell ® ELG-150
Voltage:	54 V
Rated Current:	2.80 A
Rated Power:	151.20 W
Frequency Range:	47-63 Hz
Efficiency:	>0.95/230 VAC

LED Info



Voltage:	36,3 V
Brand:	Cree ® Xlamp MHD-G
Color Temp:	5000K
Color Accuracy:	>70 CRI
Efficacy Tc=85°:	1590 Lm (700 mA)
Junction Temp.:	150°

General Information

Code	Kelvin	Lumen (Tc=25°)	Watt	Weight
034ZEU125W50S	5000	15,600 Lm	120 W	5.0 Kg

General Characteristics

Power supply	100-277 VAC - 50/60 Hz Meanwell ®
Protection index	IP 66 Dust and protected from water jet proof.
Power factor	95%
Ballast	Electronic ballast
Insulation class	I

LED Characteristics

Technology	LED
LED type	Cree ® MHDGWT-0000-00N0BN250E
CRI (Ra)	> 70
Life time estimated L70	> 100.000 h
Color temperature	5,000 K
3-step MacAdam ellipse	Center point x,y (0.3447 , 0.3553)

Construction

Material body	Aluminum extruded
Glass	Tempered transparent glass 5 mm
Gaskets	High-temperature silicone gaskets
Installation	Adjustable bracket installation
Operating temperature	-4° F / 104° F (-20° C / +40° C)

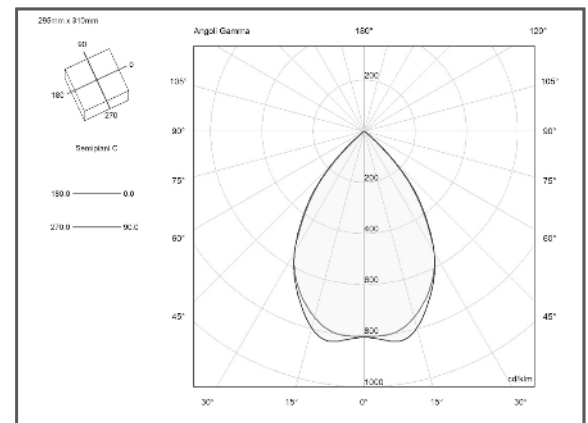
Optics Characteristics

Light diffusion	Direct light
Optics type	Khatod ® Symmetrical lens
Optics angle	Symmetrical 55° beam angle

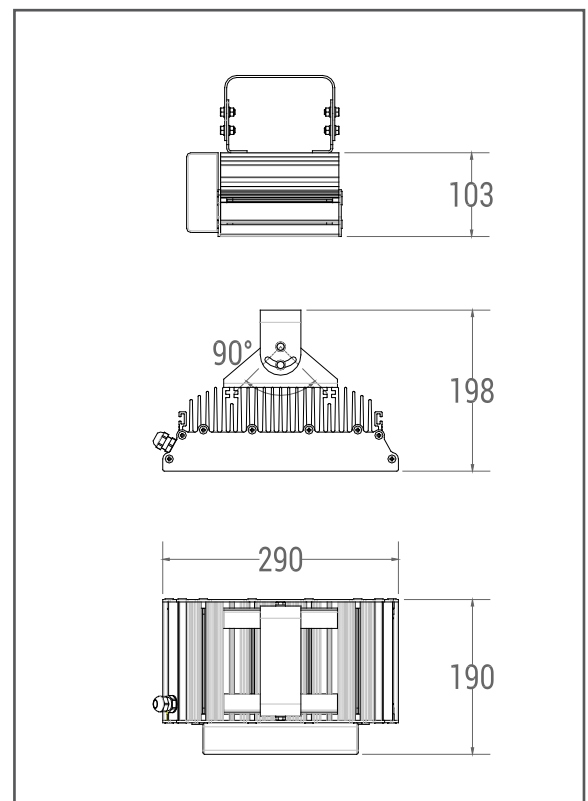
Other

Warranty	3 years
	Mercury and UV free, RoHS compliant

Light Curve



Technical Drawing

**CE RoHS**

Made in Gmax Italia headquarter
Via G. Donizetti 5 - 20090 - Assago MI - Italy
www.gmaxitaliasrl.it

The specifications are subject to change without notice.
Gmax Italia Headquarter | Via Gaetano Donizetti 5 | Assago | 20090 MI | T. +39-02-848-939-82 | W. www.gmaxitaliasrl.it